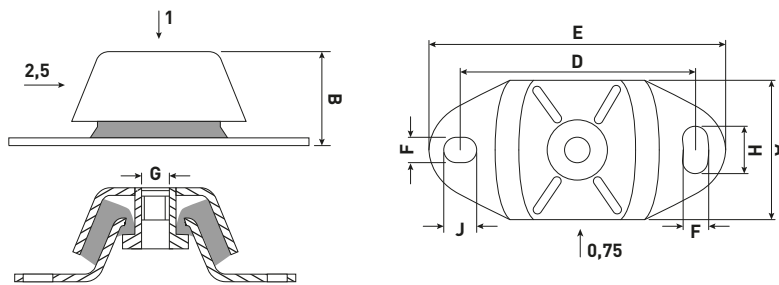


Product description

Marine mounts were originally developed for the installation of small marine engines and are therefore adapted to transfer thrust. The mounts therefore have different stiffnesses in the three load directions. In recent years, marine mounts have been popular to use in a wide range of other applications, so we now also offer them in acid-proof steel, AISI 316.

Application

Small marine engines, other diesel engines and generators, vehicles, pumps and compressors. The mounts are also useful in corrosive environments such as offshore, agriculture and coastal plants.



Type	A [mm]	B [mm]	D [mm]	E [mm]	FxH [mm]	FxJ [mm]	G [mm]	Dead weight [g]
Marine VS AISI 316	60	40	100	120	11x14	11x14	M12	400
Marine VM AISI 316	75	50	140	183	13x20	13x20	M16	860

Type	Hardness 45 Sh(A)		Hardness 55 Sh(A)		Hardness 65 Sh(A)		Hardness 75 Sh(A)	
	Max. load [kg]	Deflection [mm]	Max. load [kg]	Deflection [mm]	Max. load [kg]	Deflection [mm]	Max. load [kg]	Deflection [mm]
Marine VS	45	3.5	70	3.5	105	3.5		
Marine VM	150	5	225	5	300	5	500	5

